



48 Millbank, Westminster
London SW1P

GARTON JONES.COM

48 Millbank, Westminster
London, SW1P

GARTON JONES.COM

49 Marsham Street Lettings:
London +44 (0) 20 7340 0480
SW1P 3DP westminster@gartonjones.com
www.gartonjones.com

£625 Per Week

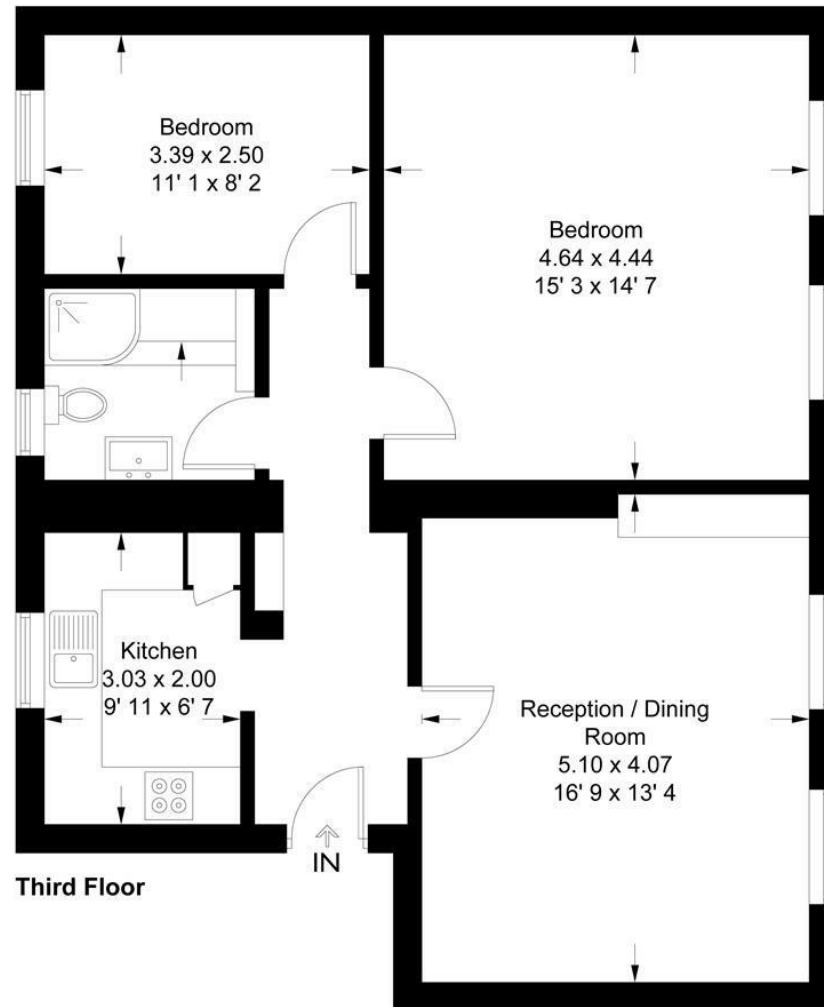
We are please to offer this 2 bedroom property in this very attractive period stucco converted building. The apartment is located on the top floor and the living space further comprises of a separate kitchen, a reception room, two good size double bedrooms and a modern shower room. There is an onsite day porter and residents have access to pretty communal gardens are also eligible for a parking permit on a first come, first served basis with spaces available, directly outside the building. 48 Millbank is located just on the corner of the banks of the River Thames by Vauxhall Bridge and is within just minutes of the Chelsea Arts College, the Tate Gallery and the Houses of Parliament. Local transport services include Pimlico, Victoria and Westminster and the Thames Clipper which are all within walking distance. St Johns Smith Square Concert Halls is close by offering a variety of classical musical performances. Garton Jones are close by so are readily available for viewings.

- 2 Bedroom Apartment
- 784 Square Feet (3rd Floor/Top)
- Separate Integrated Kitchen
- Reception Room
- Modern Bathroom
- Communal Gardens
- Daytime Concierge
- Close To Transport Links Of Pimlico, Victoria and Westminster
- Moments From Many Amenities



Millbank

Approximate Gross Internal Area = 784 sq ft / 72.8 sq m



This plan is not to scale and must be used as layout guidance only. All measurements and areas are approximate and should not be relied upon to provide accurate information. This plan must not be relied upon when making property valuations, design considerations or any other such relevant decisions. We accept no responsibility or liability (whether in contract, tort or otherwise) in relation to any loss whatsoever arising from or in connection with any use of this plan or the adequacy, accuracy or completeness of it or any information within it.

